

CBSDHG — Compressed Cement Sheet-to-Steel (Collated)

Material

Carbon Steel

Finish

Class 3 Mechanically Galvanised



Size: See the table below

Features & Benefits

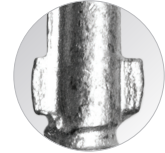
- Aggressive countersinking head for easy embedment
- #3 Square drive for ease of drive and torque — driver bits included
- Reinforced wings to cut clearance hole — no sheet ride
- Drill Point no predrilling required

Applications

- Cement Sheet/Cladding-to-Steel
- Recommended steel thickness 1.2mm–3mm
- Steel Frame



Ribbed Flat Head with Nibs
for easy countersinking



Wings to cut clearance hole
means no sheet ride



Wings to cut clearance hole
means no sheet ride



Quik Drive[®]

Specifications - Quik Drive[®] Collated

Model No.	Size	Thread	Point	Material & Finish	Box Qty	Drive Size	Replacement Bit
CBSDHGL158SA	10G x 42mm	16 TPI	Drill Point	Carbon Steel	1500	#3 Square Drive	BIT3S-RC10
CBSDHGL214SA	10G x 55mm			Class 3 Mechanically Galvanised	1000		

These coated fasteners possess a level of corrosion resistance that makes them suitable for use in some exterior and corrosive environments and with some preservative-treated timber. For applications in higher-exposure applications, consider Type-300 series stainless-steel fasteners for superior corrosion resistance. Bit(s) included with every box of screws. Pre-drilling and countersink may be necessary at ends, butt joints, and on applications where denser material is used. Follow board manufacturers recommendations where applicable.