

VGT — Variable-Pitch Girder Tiedown

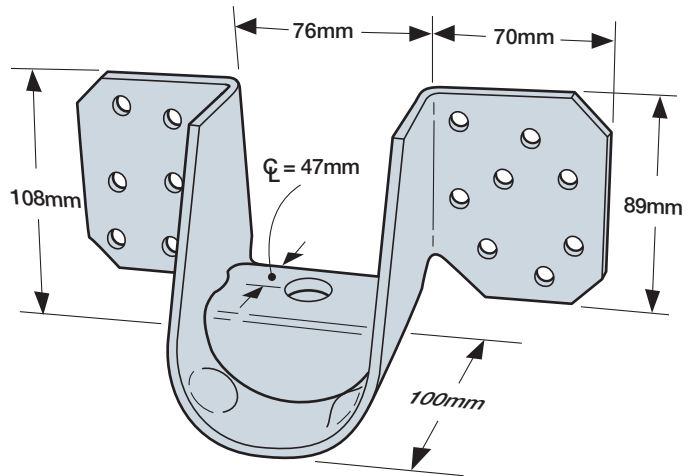
The variable-pitch girder tiedown, VGT, is a high-capacity tiedown for multi-ply girder trusses and is suitable for High Wind Zones. It attaches with self-drilling screws from the side of the truss. The VGT uses Simpson Strong-Tie® Strong-Drive® SDS Heavy-Duty Connector screws for wood truss applications. The VGT features a predeflected seat and washer reducing deflection under load. This also allows the connector to accommodate top chord pitches of up to 35 degrees.

Material: 4.5mm steel

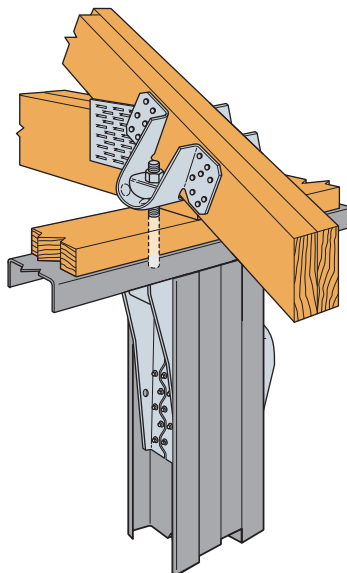
Finish: Z275 Galvanised

Installation:

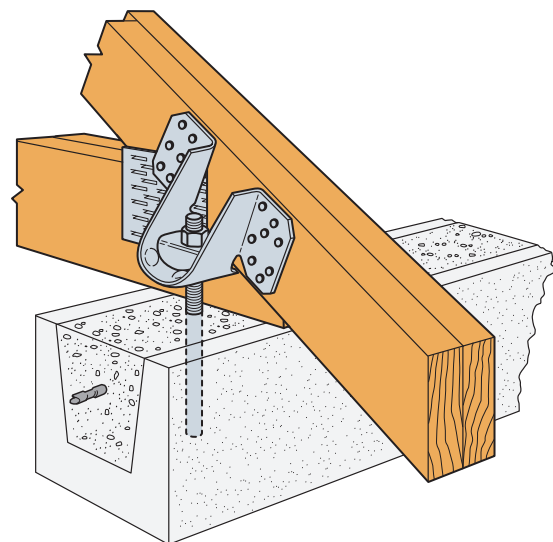
- Use all specified fasteners
- Screw holes are configured to allow for double installation on multi-member girders
- Install washer component (provided) so that top of washer is horizontal and parallel with top of wall
- Suitable for use with cast in or post installed threaded rod



VGT



Typical Hybrid VGT
Double Installation
with S/HDU9



Typical VGT
Installation in
190mm blockwork

Specifications - VGT

Model No.	Quantity	No. of Truss Plies	Fasteners		Allowable Uplift Load (kN)
			Anchor Dia.	Girder Truss	
VGT	1	2	M16	(16) SDS	38.5
	2	2	2/M16	(32) SDS	57.1
	2	3	2/M16	(32) SDS	70.8

1. Designer shall insure attached members are adequately designed to resist applied loads.
2. Minimum joint group JD5.
3. Maximum roof pitch of 35 degrees
4. Capacities in accordance to AS1720.1 and AEFAC Guide for testing and evaluation of timber connection.
5. Truss plies minimum 35mm thick each
6. M12 rod capacity is 27kN.
7. Capacity of 2/M12 rods (either side of truss) is 54kN
8. Threaded rods to be minimum grade 4.6.
9. Concrete design and fixing to concrete by others.