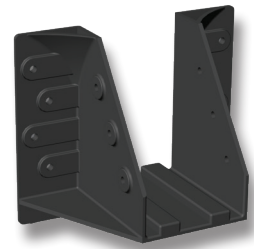


# FREPJH — FREP JOIST HANGER

**FREP Joist Hangers (Fibre Reinforced Engineered Polymer) are corrosion-proof hangers which makes them an affordable alternative to stainless steel and is perfect for outdoor corrosive environments. FREP Joist Hangers can be face mounted to suit 45mm wide joists, 90-190mm deep.**

## Features and Benefits

- Corrosion & UV resistant and a great alternative to stainless steel.
- Strong - engineered to last.
- No sharp edges.
- Reinforced holes.
- Ventilation ridges for joist breathability.
- Patented design.



FREPJH9045

## Important Notes

- Two joist hanger sizes available JH9045 and JH14045 to suit 90-120mm and 140-190mm high joists respectively.
- Not recommended for bush fire zones .
- Use 38mm x 3.32mm nails or SD9 screws (Stainless Steel or Hot Dipped Galvanised - Depending on application).
- Use Multi-Blow Collated Connector Nail Gun such as CCN64 - Conventional nail guns may damage the joist hanger.



FREPJH14045

## Material

- 2mm FREP (Fibre Reinforced Engineered Polymer)

## Technical Data

Model No.	Timber Joint Group	Design Capacity (kN) DL +LL (Floor)
FREPJH9045 / FREPJH9045-R24	JD3	3.2
	JD4	3.2
	JD5	3.0
FREPJH14045 / FREPJH14045-R20	JD3	6.2
	JD4	5.4
	JD5	4.5

Notes - Design Capacity is the lesser of the hanger material capacity and nail capacity as per NZS AS1720.1 and AS1721.1 using a Capacity Factor of  $\phi=0.8$  and  $k1=0.69$ .

## Notes for Installation

- With JD5 timber, the maximum supported floor area is 0.8m<sup>2</sup> for the FREPJH9045 and 1.0m<sup>2</sup> for the FREPJH14045. Based on a Live Load of 2kPa + Dead Load of 0.3kPa. Floor area is joist spacing x joist span/2 .
- Load bearing: All load bearing tests have been done by an independent, accredited testing body to Australian Standards AS1649, AS1720.1 and AS1170
- FREP Joist Hanger softening point 180°C and melting point is 220°C.
- Use only 38mm x 3.32mm connector nails or SD9 #9 x 38mm connector screws in either galvanised or stainless steel. When fixing the FREP Joist Hangers to Bearers FREPJH9045 there should be four nails in each flange of the Joist Hanger (Total 8) and three nails per side of each joist at each joist hanger (Total 6). FREPJH14045 there should be six nails in each flange of the Joist Hanger (Total 12) and five nails on one side and four on the other side of the joist hanger (Total 9). Please use connector nails in ALL holes provided for both the FREPJH9045 & FREPJH14045.
- Span tables should be read in conjunction with timber span tables to ensure the size and grade of joist you use is adequate for the proposed span.
- To achieve the structural design capacity, it is essential that the joists and joist hangers be installed in strict accordance with the fixing details provided.

## Durability

- UV-A FREP material has undergone 2000hr laboratory UV exposure testing compliant with ASTM D790, which includes maintaining a temperature of 60°C and high humidity.  
FREP Product Installed in an outdoor structure - limited warranty 25 years.