



OPERATING MANUAL

CCN64

Collated Connector Nailer



WARNING

BEFORE OPERATING THE TOOL, ALL OPERATORS SHOULD STUDY THIS MANUAL TO UNDERSTAND AND FOLLOW THE SAFETY WARNINGS AND INSTRUCTIONS. KEEP THIS MANUAL WITH THE TOOL FOR FUTURE REFERENCE. IF YOU HAVE ANY QUESTIONS, CONTACT YOUR SIMPSON STRONG-TIE REPRESENTATIVE OR DISTRIBUTOR.



Scan the QR Code
to be taken to the
CCN64 webpage

INTRODUCTION



The CCN64 is a nailer tool that is powered by pressurised air. It is activated by pressing the nose to the work piece. It is intended to be used to drive collated nails into pre-punched holes in metal hardware used in timber construction and to drive nails in timber-to-timber framing connections. Only collated nails shall be used with this tool and the nail size, collation angle and material must meet the specifications of this manual. Keep these instructions with the tool for future reference. Contact your local Simpson Strong-Tie representative if you have any questions.





READ AND UNDERSTAND THIS MANUAL **BEFORE** OPERATING THE TOOL. Please note that additional safety measures may be required because of your particular application.

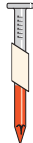
CONTENTS


Tool & Fastener Specifications	3
Tool Air Fittings	3
Safety Instructions	4 – 5
Schematic & Parts	6 – 7
Loading the Tool	8
Unloading the Tool	9
Tool Operation.....	10
Troubleshooting	11
Contact Details.....	11
Warranty	12

TOOL & FASTENER SPECIFICATIONS

Model Number:	CCN64
Action:	Multi-Blow
Dims:	L305 x W119 x H273 mm
Weight:	2.1 kg
Operating pressure:	6.2 – 8.3 bar (90 – 120 psi)
Magazine:	Single strip (approx. 28 nails)
Angle:	33° – 35°
Collation:	Paper tape
Head:	Full round head
Diameter:	3.3 3.8 4.1 mm
Length:	38 mm 64 mm (± 2 mm)

Image	Model Number	Dimensions	Description	Finish	≈ Box Qty
Collated <i>Strong-Drive</i>® 33° SCNR RING-SHANK CONNECTOR Nail					
	T10A150MCN	38 mm x 3.32mm	Full round-smooth head, Annular-Ring Shank, Diamond point 22 nails per paper-collated strips		1,500
	T9A150MCN	38 mm x 3.75 mm			1,500
	T9A250MCN	64 mm x 3.75 mm			1,000

Collated <i>Strong-Drive</i>® 33° SCN SMOOTH-SHANK CONNECTOR Nail					
	N8HDGPT500	8	38 mm x 3.32 mm	Full round-smooth head, Smooth Shank, Diamond point 22 nails per paper-collated strips	500
	N8HDGPT4000				4,000
	N10HDGPT500	10	38 mm x 3.75 mm		500
	N10HDGPT3000				3,000
	N10DHDGPT500		64 mm x 3.75 mm		500
	N10DHDGPT2500				2,500

 These coated fasteners possess a level of corrosion resistance that makes them suitable for use in some exterior and corrosive environments and with some preservative-treated timber. For applications in higher-exposure applications, consider Type-316 stainless-steel fasteners for superior corrosion resistance. See www.strongtie.com.au or www.strongtie.co.nz for additional important information before selecting a fastener for a specific application.

Need loose connector fasteners?

Visit your local Simpson Strong-Tie website to see our full range.

TOOL AIR FITTINGS

This tool uses 3/8 inch N.P.T. male fitting. **The fitting must relieve air pressure when disconnected from the air supply.**

SAFETY INSTRUCTIONS

BEFORE HANDLING OR OPERATING THIS TOOL READ AND UNDERSTAND THE WARNINGS IN THIS MANUAL.



EYE PROTECTION that conforms to AS/NZ specifications and provides protection

against flying debris from front and sides shall always be worn by the operator and others in the work area.

The employer and/or operator are responsible to ensure proper eye protection is worn. Non-side-shielded eye protection and face shields do not provide adequate protection.



HEARING PROTECTION that conforms to AS/NZ specifications may be required in some

environments that include exposure to noise that could affect hearing damage.



HEAD and FOOT PROTECTION that conforms to AS/NZ

specifications may be required in some work environments with head and foot hazards. Dress appropriately.



WARNING

- Know and understand the trigger system.
- Operate the tool only on the workpiece and at 90 degrees to the workpiece.
- Never assume the tool is empty.
- Never engage in horseplay with the tool.
- Carry the tool by the handle. Do not lift by hose.
- Never leave the tool unattended with the air supply connected.
- Do not use the tool as a hammer.
- Do not continue to use the tool if it leaks air or fails to function properly.
- Use clean, dry, regulated compressed air.
- Do not use the tool while tired, after having consumed drugs or alcohol, or while under the influence of medication.
- Do not over reach. Keep proper footing and balance at all times.



LOADING AND UNLOADING THE TOOL

- Use only nails recommended by Simpson Strong-Tie for use in the CCN64 tool.
- Disconnect air supply before loading and unloading.
- Always handle the tool with care.
- Never point the tool at yourself or another person.
- Do not depress the nose/magazine of the tool or it will activate driving.

SAFETY INSTRUCTIONS



TOOL OPERATION

- Keep hands and body away from discharge area of the tool.
- Never point the tool at yourself or others.
- Use at 90-degree angle on clean dry surfaces.
- The tool is activated by compressing the nose/magazine on any surface or material.
- The tool drives continuously while the nose/magazine is compressed.
- The tool has no depth of drive adjustment and will overdrive unless stopped by lifting the nose from the workpiece surface.
- Be careful when fastening into dense woods and wood products.
- Be careful to not drive a nail onto another nail.
- When installing metal hardware, be careful that the nail point is in the pre-punched hole.

If the tool becomes jammed and all nails cannot be removed from the tool, the tool shall be removed from service.



MAINTAINING THE TOOL

- Use care when evaluating tools.
- Always disconnect the tool from air pressure before performing maintenance.
- Use only Simpson Strong-Tie recommended fasteners and parts.
- Clean the tool after each day of use or after driving 1,000 fasteners.
- Lubricate with 3 drops of acid-free lubricant at the start of each work day or after driving 1,000 fasteners.
- Clean by wiping: magazine, nail feeder, blade guide and piston.
- Check wear parts when cleaning: magazine and bleed guide.

- The tool shall be stored in a warm dry location that is out of the reach of children.



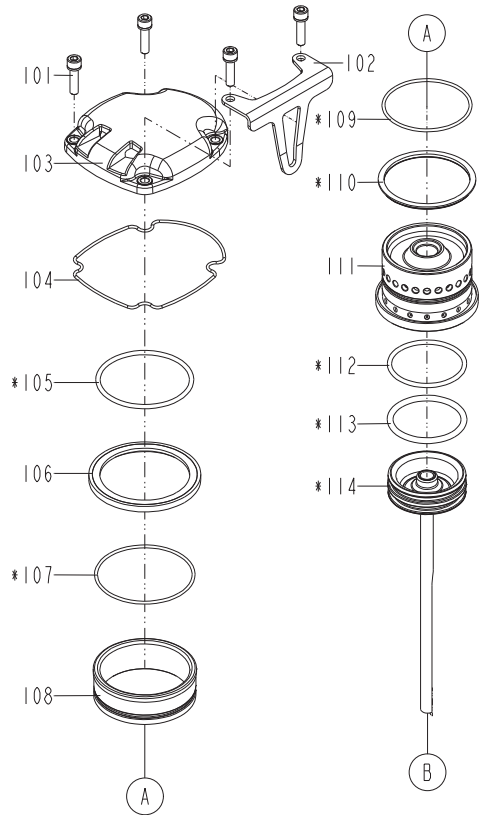
AIR SUPPLY AND CONNECTIONS

For air powered tools to operate at their best, the air supply system must be properly installed and maintained. See your air supply equipment manual for operating, maintenance, and safety instructions.

- **DO NOT OPERATE** at air pressures in excess of 6.2 bar (90 psi.)
- Air pressure at the tool shall never exceed 8.3 bar (120 psi). **EXPLOSION HAZARD!**
- Do not use oxygen, combustible gases, or bottled gases as power source for this tool. **EXPLOSION HAZARD!**
- Air connector on the tool must not hold pressure when air supply is disconnected.
- Use an air hose with diameter 10 mm (3/8 inch).
- Do not depress nose/magazine while connected to air supply or tool will activate.
- Always disconnect air supply before:
 - Making adjustments;
 - When tool is not in use;
 - When performing maintenance
 - When moving to new work area.

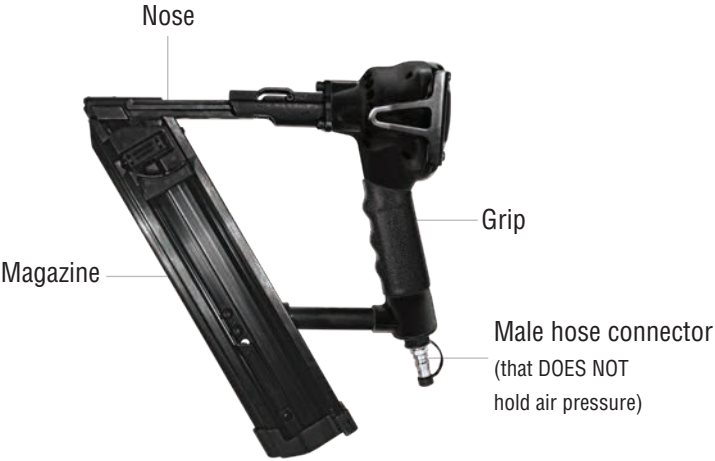
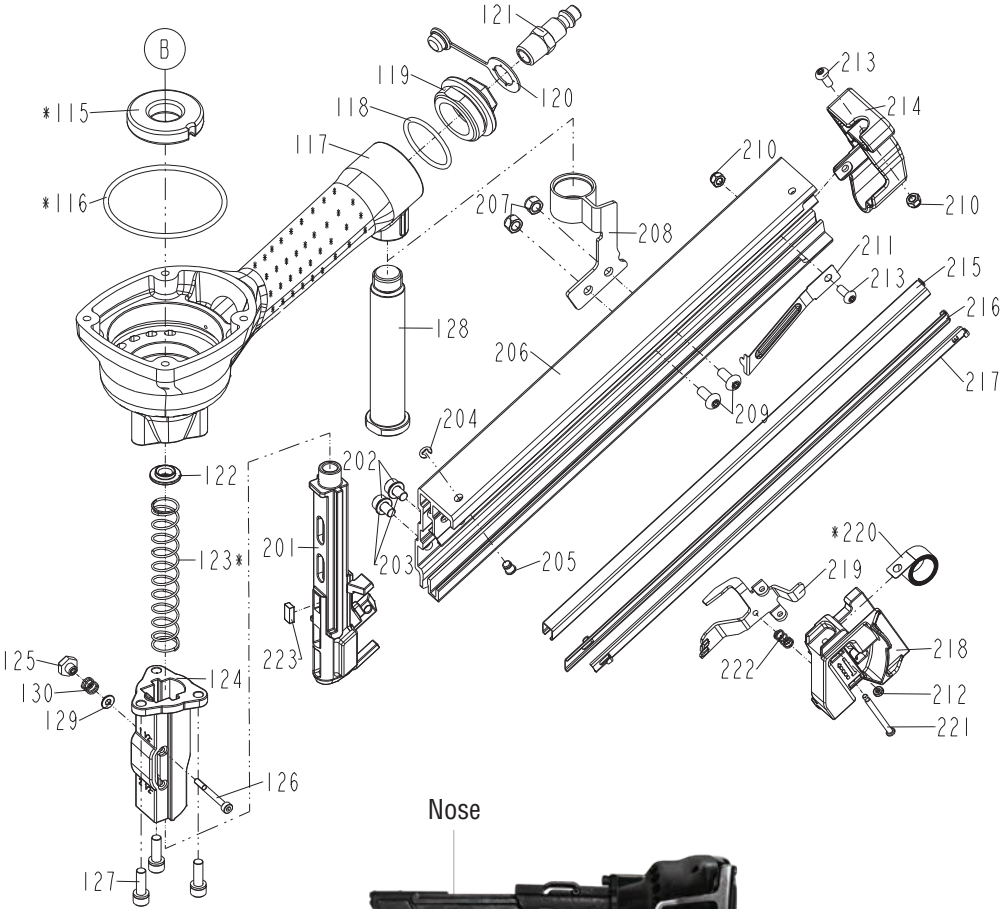
SCHEMATIC & PARTS

ITEM	PARTS NO	PARTS NAME
101	2040100-03070-0	BOLT ASSY
102	1131A-0724702-1	HANGER
103	11369-0724312-1	CAP
104	11302-0724703-1	CYLINDER CAP SEAL
105*	2041104-06020-0	O - RING
106	11399-0720002-1	COLLAR
107*	2041104-06030-0	O - RING
108	11321-0720005-1	CYLINDER SPACER
109*	2041104-06040-0	O - RING
110*	1136X-0724701-1	SEAL
111	11320-0720002-1	CYLINDER
112*	2041104-05030-0	O - RING
113*	2041104-05040-0	O - RING
114*	11204-0720010-2	DRIVER UNIT
115*	11327-0724701-1	BUMPER
116*	2041104-07020-0	O - RING
117	11230-0726604-2	GUN BODY UNIT
118	2041100-03070-0	O - RING
119	11346-0724303-1	END CAP
120	1132L-0014701-1	DUSTY COVER
121	1135V-0000001-1	AIR PLUG
122	11388-0724702-2	DRIVER GUIDE
123*	1135C-0720009-1	SPRING
124	1132N-0724706-2	DEEP IMPACT SOCKET 1
125	1137B-0724701-1	NUT
126	1131K-0724702-1	PIN
127	2040100-03100-3	BOLT ASSY
128	11378-0724703-1	SHAFT
129	2040201-01030-0	FLAT WASHER
130	1131L-0724701-1	POSITIONING SPRING
201	11382-0724704-1	NOSE PIECE
202	2040101-03030-1	HEX.SOC.HD.BOLT
203	2040201-03030-0	FLAT WASHER
204	2040302-23010-0	E - RING
205	1134L-0084701-1	BRACKET
206	11389-0724704-1	MAGAZINE A
207	2040500-03020-0	LOCK NUT
208	1136Y-0724706-1	BRACKET
209	2040102-03030-0	HALF ROUND HD.HEX.BOLT
210	2040500-02010-0	LOCK NUT
211	1130S-0724701-2	STOP NAIL PLATE
212	1131D-0460001-1	URETHANE RETAINER
213	2040102-02040-0	HALF ROUND HD.HEX.BOLT
214	11390-0724704-1	PROTECTING HOOD COVER
215	11396-0724702-1	STEEL CHANNEL



ITEM	PARTS NO	PARTS NAME
216	11396-0724708-1	STEEL CHANNEL
217	11396-0724709-1	STEEL CHANNEL
218	1136E-0724703-1	PROTECTING HOOD COVER
219	11363-0724703-1	PUSHER
220*	11372-0720002-2	SPRING
221	11318-0834701-1	TRIGGER PIVOT PIN
222	1136F-0374701-1	SPRING
223	1134E-0370001-1	MAGNET

FOR THE CCN64 TOOL



LOADING THE TOOL



WARNING

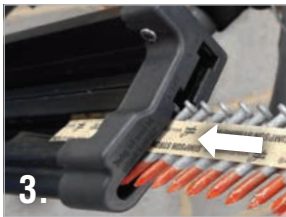
- Use only nails recommended by Simpson Strong-Tie for use in the CCN64 tool.
- Disconnect air supply before loading and unloading.
- Always handle the tool with care.
- Never point the tool at yourself or another person.
- Do not depress the nose/magazine of the tool or it will activate driving.



1. Hold the tool firmly by the grip.
ENSURE MAGAZINE IS EMPTY BEFORE PROCEEDING



2. With the fastener length selection pin at halfway, depress tool against a hard surface and slide pin to relevant size of nail intended to be used.
 - a. 1 1/2" suits 38 mm (± 2 mm) nails
 - b. 2 1/2" suits 64 mm (± 2 mm) nails



DO NOT OPERATE WITH THE PIN AT HALF WAY

3. Hold the tool upside down and insert a strip of nails into the corresponding size slot at the rear of the magazine with the point of the nails facing the nose area. Slide nails all the way to the front of the magazine.



4. Pull the pusher to the rear of the magazine until it is engaged behind the strip of nails (4a).

UNLOADING THE TOOL



Disconnect air supply before loading and unloading.

5. Hold the tool upright.
6. Depress the pusher tab (to disengage from nail strip) and slide the pusher towards the front of the magazine.
7. To release the nail strip from the magazine, press down on the stopper.
8. The nails should slide out the back of the magazine.

TOOL OPERATION



WARNING

- Keep hands and body away from discharge area of the tool.
- Never point the tool at yourself or others.
- Use at 90-degree angle on clean dry surfaces.
- The tool is activated by compressing the nose/magazine on any surface or material.
- The tool drives continuously while the nose/magazine is compressed.
- The tool has no depth of drive adjustment and will overdrive unless stopped by lifting the nose from the workpiece surface.
- Be careful when fastening into dense woods and wood products.
- Be careful to not drive a nail onto another nail.
- When installing metal hardware, be careful that the nail point is in the pre-punched hole.
- If the tool becomes jammed and all nails cannot be removed from the tool, the tool shall be removed from service.



9. Connect recommended air supply.

10. The tool is ready for use.

11. Locate hole in connector. The tool is activated by compressing the nose/magazine on the surface.

12. Depress the tool continuously against the surface at 90° until the tool disengages hammering.



TROUBLE SHOOTING

SYMPTOM	CAUSE	SOLUTION
Over driving fasteners	Excessive air pressure	Check air pressure to ensure the recommended air pressure is being used; 6.2 – 8.3 bar (90 – 120 psi)
	Base material	Ensure correct timber is being used.
	Nails too small	Use correctly sized nails.
	Failure to stop drive	Control nose contact to workpiece surface.
Tool does not drive or drives poorly	Activation lever in nose not working	Check lever movement and replace as needed.
	Wrong nails	Use recommended nails.
	Air supply hose	Use air hose that is correct size and length.
	Air supply	Confirm air supply volume is adequate for tool(s).
	Worn or defective parts	Check and replace piston ring, piston bumper. Or driver blade as needed.
	No fasteners are in the magazine	Load tool.
	Clogged air ports or kinked hose	Check air ports for debris and hose for kinks.
Nail strip will not advance in magazine	Strip incorrectly loaded.	Check that recommended nails are loaded.
	Worn guide groove in the guide blade	Check and replace guide blade if worn.
	Magazine is jammed or bent.	Check that magazine is not jammed or bent.

CONTACT DETAILS

AUSTRALIA

1/16 Kenoma Place
 Arndell Park NSW 2148
 Call **1300 STRONGTIE**
www.strongtie.com.au

NEW ZEALAND

52A Arrenway Drive
 Albany, Auckland 0632
 Call **09 477 4440**
www.strongtie.co.nz



LIMITED 12-MONTH WARRANTY

This 12-month Warranty applies to the **Simpson Strong-Tie® CCN64** tool purchased in Australia and New Zealand ("Products") and must be read in conjunction with the General Notes, Terms and Conditions of Sale, and Operating Instruction information. The benefits given under this Warranty are additional to any other rights and remedies that you may have under a law in relation to the Products.

The relevant Simpson Strong-Tie entity listed at the bottom of this Warranty ("Simpson") warrants the Products to the original purchaser to be free from substantial defects in material, manufacturing, and design for a 12 month term from date of purchase, if properly stored, maintained and used in accordance with operating instructions. This Warranty does not provide a remedy for normal wear and tear or any Product that was: (1) purchased other than from an authorised Simpson Strong-Tie Australia/Simpson Strong-Tie New Zealand dealer, retailer or distributor; (2) modified or altered; (3) used with any fasteners other than authentic Simpson Strong-Tie® fasteners; (4) improperly serviced; or (5) subject to negligence or excessive use, or any use not in accordance with the printed materials provided with the Product as determined by Simpson.

This Warranty does not cover:

- Any Air compressor or regulator supplied with the Product that are manufactured by another company.
- Fasteners or other consumables purchased with the Product.

The following statement is provided where this Product is supplied to a buyer who is a "consumer" under the Australian Consumer Law:

Our goods come with guarantees that cannot be excluded under the Australian Consumer Law. You are entitled to a replacement or a refund for a major failure and for compensation for any other reasonably foreseeable loss or damage. You are also entitled to have the goods repaired or replaced if the goods fail to be of acceptable quality and the failure does not amount to a major failure.

Procedure in claiming under this warranty:

Identifying a warranty claim:

1. Less than 12 months have elapsed from the original date of purchase and you have original receipt/tax invoice as proof of purchase.
2. The Product:
 - a. does not visually fit the description (i.e. does not resemble the packaging look or website images);
 - b. when opened for the first time has loose items (i.e. washers, springs, pins, etc.) within the case; or
 - c. no longer functions for its intended purposes (taking into account normal wear and tear).

Making a claim:

1. If you believe the Product is damaged or defective, ensure the Product is no longer used for any purposes, safely store in original case, and secure for no future use.
2. Please make immediate contact with your closest Simpson regional office to arrange shipment of the Product back to the address below. Unless Simpson agrees with you otherwise, you will be liable to pay for the costs of returning the product to Simpson.
3. A Simpson Strong-Tie ticket number will be issued to you.

Remedy

If Simpson agrees that you have a valid claim under this warranty, depending on the circumstances, either a replacement tool will be sent to you or a Simpson Strong-Tie representative will ensure the Product is promptly repaired and returned to you.

In Australia:

Simpson Strong-Tie Australia Pty Limited
1/16 Kenoma Place, Arndell Park, NSW 2148
Phone: 1300 STRONGTIE (1300 787664)
Email: sales.au@strongtie.com

In New Zealand:

Simpson Strong-Tie New Zealand Limited
52A Arrenway Drive, Albany Auckland
Phone: (64) 09 477 4440
Email: sales.nz@strongtie.com

IF YOU ARE NOT A "CONSUMER" UNDER THE AUSTRALIAN CONSUMER LAW, SIMPSON DISCLAIMS ALL OTHER WARRANTIES, INCLUDING BUT NOT LIMITED TO IMPLIED WARRANTIES OF MERCHANTABILITY AND FITNESS FOR A PARTICULAR PURPOSE. IN NO EVENT WILL SIMPSON BE LIABLE FOR INCIDENTAL, CONSEQUENTIAL, PUNITIVE OR SPECIAL DAMAGES OR DIRECT OR INDIRECT LOSS OF ANY KIND, INCLUDING BUT NOT LIMITED TO PROPERTY DAMAGE AND PERSONAL INJURY.

OTHERWISE, TO THE EXTENT THAT THE PRODUCT IS NOT OF A KIND ORDINARILY ACQUIRED FOR PERSONAL, DOMESTIC OR HOUSEHOLD USE OR CONSUMPTION, SIMPSON'S ENTIRE LIABILITY IS LIMITED TO THE REPLACEMENT OF THE PRODUCT OR THE SUPPLY OF EQUIVALENT PRODUCT, THE REPAIR OF THE PRODUCT OR THE COST OF DOING SO.