

Z2

Z-Clip



Z clips for securing I-Joists and Floor Trusses to parallel internal bracing walls

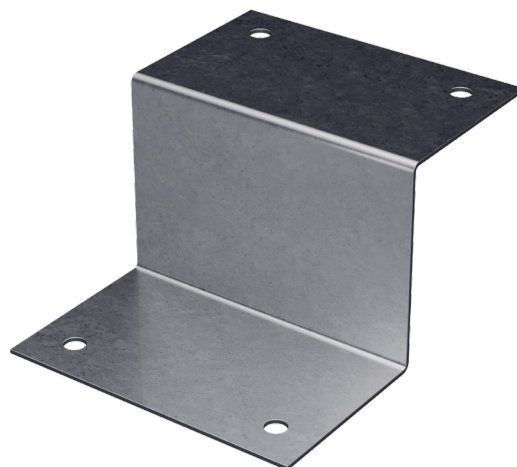
The Simpson Strong-Tie Z-Clip is the ideal method to connect flat blocking between joists or trusses to support sheathing, trimmers or noggings between I-Beams and Floor Trusses to internal bracing walls.

Features and Benefits:

- Z clips reduce timber splitting as nails are installed to the wider face of timber members.
- Transfers lateral shear forces as required by Residential Timber-Framed Construction Standards AS 1684.2 and AS 1684.3 Appendix J5 and AS 1684.4 clause 8.3.2.8.
- Quick and easy to use - Installed with (4) 3.75mm nails per Z-clip.
- Z275 galvanised coating offers corrosion resistance for long-lasting performance.

Material: 1.0mm Steel

Finish: Z275 Galvanised



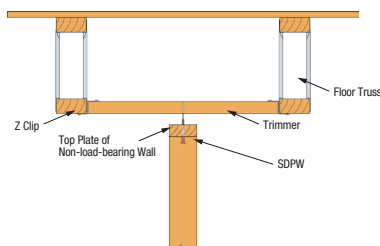
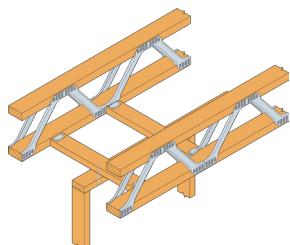
Z2 Clip

Z2 Z-Clip

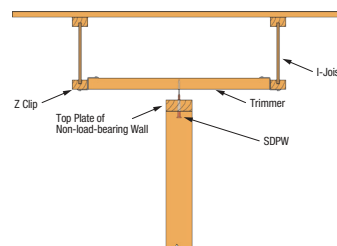
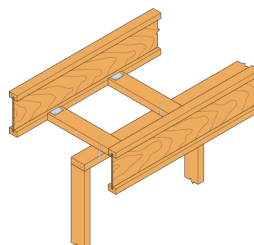
SIMPSON
Strong-Tie

Application Examples

Floor Truss: Connects to top of trimmer and bottom of joist.



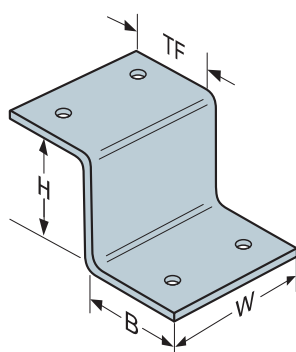
I-Joist: Connects to top of trimmer and bottom of joist.



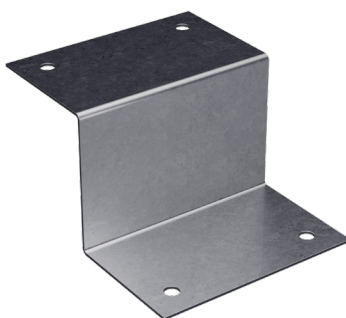
Note: Z clips do not provide lateral stability. Do not walk on stiffeners or apply load until diaphragm is installed and nailed to stiffeners. Use all specified fasteners.

Product Information

Model No.	Material	Finish	Nails Required	TF Dim. mm	H Dim. mm	B Dim. mm	W Dim. mm	Carton Qty	Individual Barcode	Carton Barcode	Weight ea	Carton Dim. (W x L x H) and weight
Z2	1.0mm Steel	Z275 Galvanised	(4) 38mm x 3.75mm	35	38	35	58	100	044315950001	10044315950008	50g	200 x 260 x 170mm, 5.0kg



Z2 Dimensions



Z2 Clip



Z2 Packaging

Designed and Tested

Simpson Strong-Tie® connectors have been designed and tested for use with specific types and sizes of nails or screws. The specified fastener size, type and quantity must be installed in the correct holes on the connector to achieve published loads.

Other factors such as the fastener material and finish are also important as the use of incorrect fasteners or misinstallation can compromise the connector performance and could lead to failure. Simpson Strong-Tie has a broad range of fasteners designed to suit our range of connectors.

Partner Products

Model No.	Description	Box Qty.
N10DHDG-R	38mm x 3.75mm #10 Connector Nail Hot-Dip Galvanised - Loose	120
N10D5HDG-R	38mm x 3.75mm #10 Connector Nail Hot-Dip Galvanised - Loose	600
N10HDGPT500	38mm x 3.75mm #10 Connector Nail Hot-Dip Galvanised - Collated	500
N10HDGPT3000	38mm x 3.75mm #10 Connector Nail Hot-Dip Galvanised - Collated	3,000
CCN64	CCN64 Collated Connector Nailer (33°-35° Paper Tape)	1



Simpson Strong-Tie® Australia
Call **1300 STRONGTIE** (1300 787 664)
www.strongtie.com.au

Simpson Strong-Tie Limited Warranty: For the Limited Warranty that applies to Simpson Strong-Tie products, please consult www.strongtie.com.au/warranty. To obtain a copy of the Limited Warranty, contact us at info.au@strongtie.com, or at the number provided here. The Limited Warranty contains important disclaimers, limitations and exclusions, and applies only if the products have been properly specified, installed, maintained, and used in accordance with the design limits and the structural, technical, and environmental specifications in the Simpson Strong-Tie Documentation. All future purchases of Simpson Strong-Tie products are subject to the terms of the Limited Warranty in effect as of the purchase date.