

VGT

Variable-Pitch Girder Tiedown

SIMPSON
Strong-Tie



Timber truss application

Safely joins multiple trusses together, allowing them to act as a single unit.

The variable-pitch girder tiedown, VGT, is a high-capacity tiedown for multi-ply girder trusses and is suitable for High Wind Zones. It attaches with self-drilling screws from the side of the truss. The VGT uses Simpson Strong-Tie® Strong-Drive® SDS Heavy-Duty Connector screws for wood truss applications.

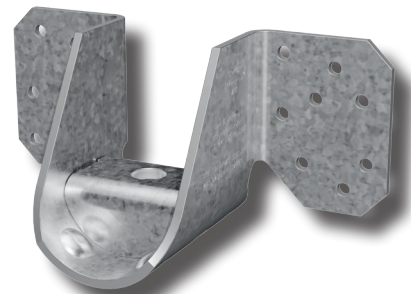
The VGT features a predeflected seat and washer reducing deflection under load. This also allows the connector to accommodate top chord pitches of up to 35 degrees.

Features and Benefits:

- Suitable for retrofit applications
- Available with one flange concealed for attachment to trusses with no tail
- Load rated to resist high-wind forces
- Suits 12mm and 16mm threaded rod
- Can be used with post installed AT-HP or VT-HP

Material: 4.5mm steel

Finish: Z275 Galvanised



Simpson Strong-Tie® Australia
Call **1300 STRONGTIE** (1300 787 664)
www.strongtie.com.au

Simpson Strong-Tie Limited Warranty: For the Limited Warranty that applies to Simpson Strong-Tie products, please consult www.strongtie.com.au/warranty. To obtain a copy of the Limited Warranty, contact us at info.au@strongtie.com, or at the number provided here. The Limited Warranty contains important disclaimers, limitations and exclusions, and applies only if the products have been properly specified, installed, maintained, and used in accordance with the design limits and the structural, technical, and environmental specifications in the Simpson Strong-Tie Documentation. All future purchases of Simpson Strong-Tie products are subject to the terms of the Limited Warranty in effect as of the purchase date.

© 2023 Simpson Strong-Tie Company Inc. F-C-VGT-AU23

VGT

Variable-Pitch Girder Tiedown

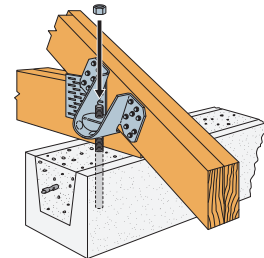
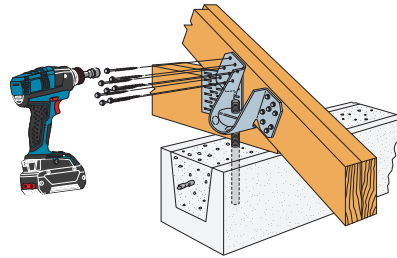
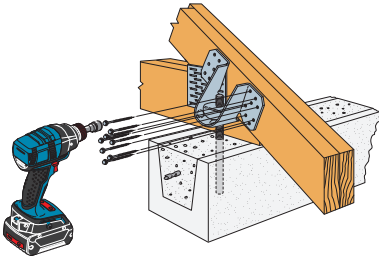
**SIMPSON
Strong-Tie®**

Installation

1. Place the VGT through the threaded rod and install all SDS25300 screws (included) into the bottom side of the connector.

2. Apply the remaining screws into the top side of the connector.

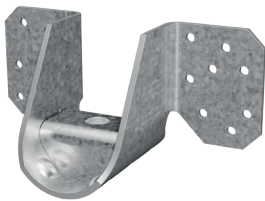
3. Apply the nut to the threaded rod and tighten.



Note: Box includes SDS25300 6.4mm x 76mm Heavy Duty Connector Screws

Product Information

Model No.	Box Qty	Individual Barcode	Carton Barcode	Weight ea	Carton Dim. (W x L x H) and weight
VGT	6	707392678007	10707392678004	3.6kg	200 x 340 x 240mm, 22.0kg



Designed and Tested

Simpson Strong-Tie® connectors have been designed and tested for use with specific types and sizes of nails or screws.

The specified fastener size, type and quantity must be installed in the correct holes on the connector to achieve published loads.

Other factors such as the fastener material and finish are also important as the use of incorrect fasteners or misinstallation can compromise the connector performance and could lead to failure. Simpson Strong-Tie has a broad range of fasteners designed to suit our range of connectors.

Compatible Fasteners

Model No.	Size	Box Qty	Thread	Point	Head Type	Material & Finish
SDS25300-R25	6.4mm x 76mm	25	Serrated Threads	Type 17	3/8" Hex Head	Double-Barrier Coating



Compatible Chemical Anchor

Model No.	Desc	Volume	Box Qty
AT-HP300BLUE	Fast cure vinyl ester anchoring adhesive with C1 and C2 ETA <small>(Includes 2 mixing nozzles - MN1)</small>	300ml	12
VT-HP300GREY	Fast cure vinyl ester anchoring adhesive with colour change technology <small>(Includes 2 mixing nozzles - MN1)</small>	300ml	12



Simpson Strong-Tie® Australia
Call **1300 STRONGTIE (1300 787 664)**
www.strongtie.com.au

Simpson Strong-Tie Limited Warranty: For the Limited Warranty that applies to Simpson Strong-Tie products, please consult www.strongtie.com.au/warranty. To obtain a copy of the Limited Warranty, contact us at info.au@strongtie.com, or at the number provided here. The Limited Warranty contains important disclaimers, limitations and exclusions, and applies only if the products have been properly specified, installed, maintained, and used in accordance with the design limits and the structural, technical, and environmental specifications in the Simpson Strong-Tie Documentation. All future purchases of Simpson Strong-Tie products are subject to the terms of the Limited Warranty in effect as of the purchase date.