

MPS

Multi Purpose Support

SIMPSON
Strong-Tie

**MPS LOCATED
HERE**



To suit bottom of bearer or joist heights from 90mm to 150mm

The Multi Purpose Support (MPS) has been designed as a mid-sized support. The MPS has excellent adjustability, along with the strength and versatility to be used with either bearer or joist combinations, or with joists on their own.

Features & Benefits

- Unique design provides significant load-bearing capacity for a relatively light-weight product.
- Provides top of joist/bearer heights between 180mm and 430mm off existing concrete surface.
- Provides bottom of joist/bearer heights of between 90mm 150mm.
- Highly versatile for bearer or joist combinations, or with joists on their own.
- Available in "kit" form, it is efficiently packaged and quick and easy to assemble.
- All components are hot dip galvanised (275g/m²).

Material & Finish

Hot Dip Galvanised Steel (275g/m²)

Base

3.0mm thick

Seat

3.0mm thick

Corrosion Information

For corrosion and fastener information, and general warnings, see:

- <https://strongtie.co.nz/resources#corrosion-information>
- <https://strongtie.com.au/resources#corrosion-information>

Approvals

Manufactured to meet deck loading as per Australian/New Zealand Standard AS/NZS 1170.1:2002, Permanent, imposed and other actions.

Height Adjustment



Minimum height without locking nut - 90mm



Minimum height with locking nut - 100mm



Maximum design height - 150mm

Simpson Strong-Tie® Australia
Call **1300 STRONG** (1300 787 664)
www.strongtie.com.au

Simpson Strong-Tie® New Zealand
Call **09 477 4440**
www.strongtie.co.nz

Simpson Strong-Tie Limited Warranty: For the Limited Warranty that applies to Simpson Strong-Tie products, please consult www.strongtie.com.au/warranty or www.strongtie.co.nz/warranty. To obtain a copy of the Limited Warranty, contact us at info.au@strongtie.com or info.nz@strongtie.com, or at the number provided here. The Limited Warranty contains important disclaimers, limitations and exclusions, and applies only if the products have been properly specified, installed, maintained, and used in accordance with the design limits and the structural, technical, and environmental specifications in the Simpson Strong-Tie Documentation. All future purchases of Simpson Strong-Tie products are subject to the terms of the Limited Warranty in effect as of the purchase date.

© 2024 Simpson Strong-Tie Company Inc. **F-C-MPS-AUNZ24 5.24**

MPS

Multi Purpose Support



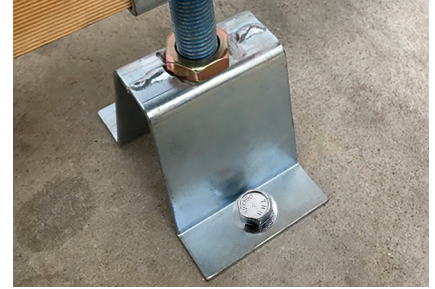
Installation



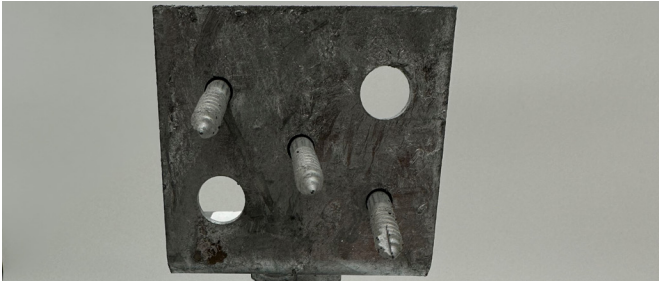
1. Pre-drill hole in concrete.



2. Set height accordingly.



3. Fixing MPS To Concrete: 2 x 10mm x 60mm THD Titen HD Screw Anchor (THD10060MG).



4. Insert Simpson Strong-Tie SDWH27 Timber-Hex screws into the large holes or 6.4mm SDS Heavy Duty Connector Screws into the smaller holes. Minimum 2 of either screws or bolts must be installed.



Note: When fixing 65mm - 100mm wide timber to MPS use 6.4mm x 76mm SDS Heavy Duty Connector Screws. Or when fixing 45mm - 65mm wide timber to MPS use 6.4mm x 38mm SDS Heavy Duty Connector Screws.

Product Information

Model No.	Desc.	Carton Qty	Carton Barcode	Weight ea	Carton Dim. (W x L x H) and weight
MPSKIT-R8	Kit includes 8x base plates, 100mm threaded rods, washers and joist bracket	8	707392025412	1kg	220 x 235 x 100mm, 8kg



Note: No screws or anchors are included

Designed and Tested

Simpson Strong-Tie® connectors have been designed and tested for use with specific types and sizes of nails or screws. The specified fastener size, type and quantity must be installed in the correct holes on the connector to achieve published loads.

Other factors such as the fastener material and finish are also important as the use of incorrect fasteners or misinstallation can compromise the connector performance and could lead to failure. Simpson Strong-Tie has a broad range of fasteners designed to suit our range of connectors.

Simpson Strong-Tie® Australia
Call **1300 STRONG** (1300 787 664)
www.strongtie.com.au

Simpson Strong-Tie® New Zealand
Call **09 477 4440**
www.strongtie.co.nz

Simpson Strong-Tie Limited Warranty: For the Limited Warranty that applies to Simpson Strong-Tie products, please consult www.strongtie.com.au/warranty or www.strongtie.co.nz/warranty. To obtain a copy of the Limited Warranty, contact us at info.au@strongtie.com or info.nz@strongtie.com, or at the number provided here. The Limited Warranty contains important disclaimers, limitations and exclusions, and applies only if the products have been properly specified, installed, maintained, and used in accordance with the design limits and the structural, technical, and environmental specifications in the Simpson Strong-Tie Documentation. All future purchases of Simpson Strong-Tie products are subject to the terms of the Limited Warranty in effect as of the purchase date.