

FREPJH Joist Hanger

Fibre Reinforced Engineered Polymer

SIMPSON

Strong-Tie



Corrosion resistant joist hangers at a more economical price point than stainless steel

FREP Joist Hangers (Fibre Reinforced Engineered Polymer) are corrosion-proof hangers which makes them an affordable alternative to stainless steel and is perfect for outdoor corrosive environments. FREP Joist Hangers can be face mounted to suit 45mm wide joists, 90-190mm deep.

Features and Benefits

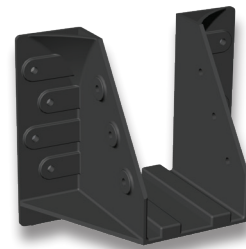
- Corrosion & UV resistant and a great alternative to stainless steel
- Strong and are engineered to last
- No sharp edges
- Easier to use than conventional joist hangers
- Reinforced holes
- Ventilation ridges for joist breathability
- Patented design

Important Notes

- Two joist hanger sizes available FREPJH9045 and FREPJH14045 to suit 90-120mm and 140-190mm high joists respectively
- Not recommended for bush fire zones
- Use 38mm x 3.32mm nails or SD9 screws (Stainless Steel or Hot Dipped Galvanised - Depending on application)
- Use Multi-Blow Collated Connector Nail Gun such as CCN64 - Conventional nail guns may damage the joist hanger

Material

- 2mm FREP (Fibre Reinforced Engineered Polymer)



FREPJH9045



FREPJH14045

Simpson Strong-Tie Australia
Call **1300 STRONGTIE (1300 787 664)**
www.strongtie.com.au

Simpson Strong-Tie New Zealand
Call **09 477 4440**
www.strongtie.co.nz

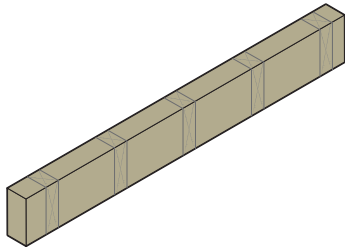
Simpson Strong-Tie Limited Warranty: For the Limited Warranty that applies to Simpson Strong-Tie products, please consult www.strongtie.com.au/warranty or www.strongtie.co.nz/warranty. To obtain a copy of the Limited Warranty, contact us at info.au@strongtie.com or info.nz@strongtie.com, or at the number provided here. The Limited Warranty contains important disclaimers, limitations and exclusions, and applies only if the products have been properly specified, installed, maintained, and used in accordance with the design limits and the structural, technical, and environmental specifications in the Simpson Strong-Tie Documentation. All future purchases of Simpson Strong-Tie products are subject to the terms of the Limited Warranty in effect as of the purchase date.

FREPJH Joist Hanger

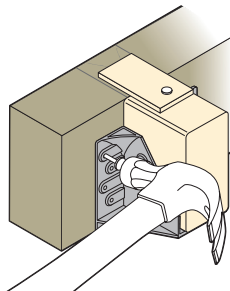
Fibre Reinforced Engineered Polymer



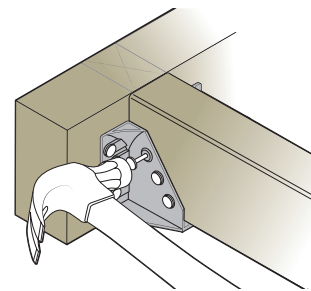
Installation



Step 1 - Mark out positions of the FREP Joist Hangers on your bearer.



Step 2 - Attach Connector Nails (top left and right nails first). Use either loose or CCN64 collated nailer. Alternatively, use SD9 Connector Screws.



Step 3 - Insert Joists in FREP Joist Hangers and nail off.

Notes:

Load Bearing

All load bearing tests have been done by an independent, accredited testing body to Australian Standards AS1649 and AS1720.

Joist Span Requirements

Timber span tables should be read in conjunction with timber manufacturer/supplier span and joist tables to ensure the correct size and grade of joist you use is adequate for the proposed span.

Durability

UV-A FREP material has undergone 2000hr laboratory UV exposure testing compliant with ASTM D790, which includes maintaining a temperature of 60°C and high humidity.

FREP Product Installed in an outdoor structure - limited warranty 25 years.

Product Information

Model No.	Joist Size	Prod. Dim. Ea. (W x L x H) and weight	Material	Barcode (Carton)	Ctn Qty	Ctn Dimensions (mm) D x W x H, kg
FREPJH9045	90mm x 45mm	106 x 85 x 60mm, 27g	Fibre Reinforced Engineered Polymer (FREP)	707392025528	40	570 x 220 x 140, 2.5
FREPJH9045-R24*				707392025511	24	380 x 300 x 140, 1.3
FREPJH14045	140mm x 45mm	118 x 139 x 60mm, 95g		707392026099	42	500 x 280 x 210, 4.0
FREPJH14045-R20*				707392026082	20	380 x 300 x 260, 2.0

*Available in Australia only



FREPJH9045



FREPJH14045



FREPJH9045
Carton



FREPJH9045-R24
Carton



FREPJH14045
Carton



FREPJH14045-R20
Carton

Partner Products:

CCN64 Collated Connector Nailer



HDG - 38 x 3.32mm Nails (N8HDG)



316SS - 38 x 3.32mm Nails (T10)



Mech. Gal. - #9 x 38mm (SD9)



316SS - #9 x 38mm (SD9SS)



BITHEXR14-R1



Simpson Strong-Tie Australia
Call **1300 STRONGTIE (1300 787 664)**
www.strongtie.com.au

Simpson Strong-Tie New Zealand
Call **09 477 4440**
www.strongtie.co.nz

Simpson Strong-Tie Limited Warranty: For the Limited Warranty that applies to Simpson Strong-Tie products, please consult www.strongtie.com.au/warranty or www.strongtie.co.nz/warranty. To obtain a copy of the Limited Warranty, contact us at info.au@strongtie.com or info.nz@strongtie.com, or at the number provided here. The Limited Warranty contains important disclaimers, limitations and exclusions, and applies only if the products have been properly specified, installed, maintained, and used in accordance with the design limits and the structural, technical, and environmental specifications in the Simpson Strong-Tie Documentation. All future purchases of Simpson Strong-Tie products are subject to the terms of the Limited Warranty in effect as of the purchase date.