

# AJH

## Adjustable Joist Support

**SIMPSON**  
**Strong-Tie**



The AJH is ideal for areas where limited ground clearance is available

**The Adjustable Joist Support has been designed specifically to enable decks to easily be built over concrete slabs in areas where limited ground clearance is available. It is ideal for use when the step-down from your door to your concrete slab is between 100mm (minimum) and around 230mm (maximum).**

### Features and Benefits

- Keeps your joists off the concrete and free of unwanted moisture ingress. This prevents joist-rot through the bottom of your joists.
- Is ideal for use on areas where the concrete has built in "fall" - to provide a level deck.
- Quick and easy to use – purpose-built for the application.
- Gives a neat, professional look across your deck structure without resorting to various different packers and brackets to achieve your end result.
- Height of the deck is determined by the length of bolts used.

### Material & Finish

Hot Dip Galvanised Steel (275g/m<sup>2</sup>)

### Base

1.5mm thick

### Hanger

2.0mm thick

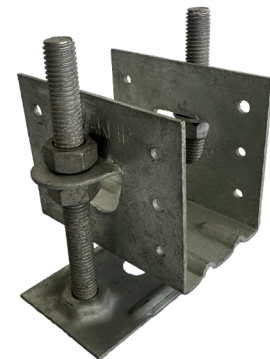
### Corrosion Information

For corrosion and fastener information, and general warnings, see:

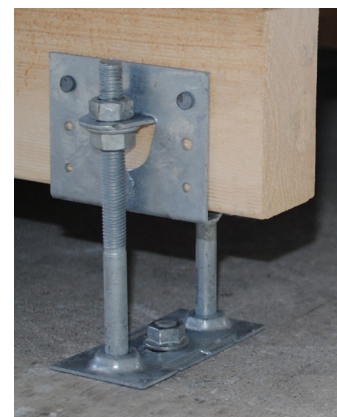
- <https://strongtie.co.nz/resources#corrosion-information>
- <https://strongtie.com.au/resources#corrosion-information>

### Approvals

Manufactured to meet deck loading as per Australian/New Zealand Standard AS/NZS 1170.1:2002, Permanent, imposed and other actions.



Minimum height - 100mm



Maximum height - 230mm

Simpson Strong-Tie® Australia  
Call **1300 STRONG** (1300 787 664)  
[www.strongtie.com.au](http://www.strongtie.com.au)

Simpson Strong-Tie® New Zealand  
Call **09 477 4440**  
[www.strongtie.co.nz](http://www.strongtie.co.nz)

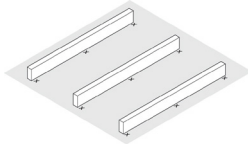
**Simpson Strong-Tie Limited Warranty:** For the Limited Warranty that applies to Simpson Strong-Tie products, please consult [www.strongtie.com.au/warranty](http://www.strongtie.com.au/warranty) or [www.strongtie.co.nz/warranty](http://www.strongtie.co.nz/warranty). To obtain a copy of the Limited Warranty, contact us at [info.au@strongtie.com](mailto:info.au@strongtie.com) or [info.nz@strongtie.com](mailto:info.nz@strongtie.com), or at the number provided here. The Limited Warranty contains important disclaimers, limitations and exclusions, and applies only if the products have been properly specified, installed, maintained, and used in accordance with the design limits and the structural, technical, and environmental specifications in the Simpson Strong-Tie Documentation. All future purchases of Simpson Strong-Tie products are subject to the terms of the Limited Warranty in effect as of the purchase date.

© 2024 Simpson Strong-Tie Company Inc. F-C-AJH-AUNZ24 5.24

## Installation

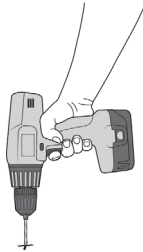
### Step 1 - Positioning Joist Support Base Plates

Mark out positions for the base plates on the concrete slab (see table for minimum span requirements for 90mm and 70mm joists). These are all based upon "continuous span" with joists at 450mm between centers. Either use a "straight edge" or run a string line from one of the notches in the outer abase plates and flick the line for the positions of the internal base plates.



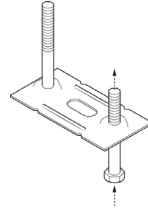
### Step 2 - Drill Holes for Base Plate

Drill holes for base plates (or for joist Supports if securing them directly to concrete) using 12mm or 10mm masonry bit to match concrete anchor.



### Step 3 - Inserting M10 Hex Head bolt

Insert 2 x 10mm hex-bolt through base plate. Note: The Adjustable Joist Support system is designed to provide a "top of the joist" height from 80mm (using 60mm length bolts + 70mm x 45mm joists) to 170mm (using 120mm length bolts + 90mm x 45mm joists).

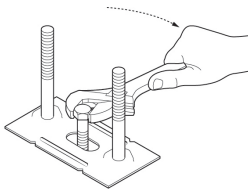


### Step 4 - Fixing Base Plate

Fix base plate to concrete using TDH M10 x 60mm concrete screw anchor.

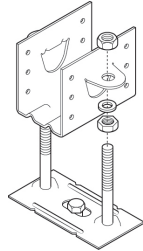
Repeat steps 1 – 4 for all base-plates to be installed. Tip No. 1 before fully tightening concrete anchor, either use a straight edge or run a string line along the edge of the base-plate vertical bolts to ensure they line up correctly. Adjust base-plate in the slot if required.

Tip No. 2 Check all base-plates are "square" to the above-mentioned straight edge or string line.



### Step 5 - Attach Joist Support

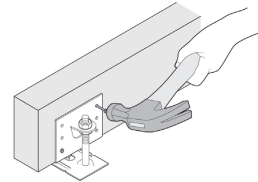
Attach joist Support onto hex bolts and adjust to approx height required. Semi-tighten nuts – this will tighten the whole structure enough to withstand joists being inserted and secured.



### Step 6 - Insert Joist into Support

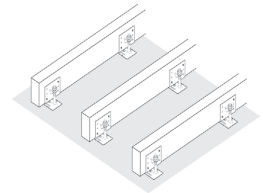
Insert joist into joist Support and secure with minimum 2 of 3.32mm x 38mm N8 connector nails or SD#10 screws on each side of the joist Support.

Tip: – when fixing nails, brace the other side of the joist Support with your foot to minimise vibration.



### Step 7 - Joist Adjustment

Adjust joist to correct height using dumpy or laser-level or string line. (Note – you will need to loosen the nuts off if the joist support height needs adjusting) Fully tighten nuts locking the joist Supports.



## Product Information

Model No.	Product Description	Weight Ea.	Carton Qty	Carton Barcode	Carton Dim. (W x L x H) and weight
AJH38G-24	Adjustable 38mm Joist Support (AU Price Book only)	0.27kg	24	707392025290	200 x 265 x 210mm, 6.3kg
AJH38G-8	Adjustable 38mm Joist Support (AU Price Book only)	0.27kg	8	707392025283	205 x 260 x 105mm, 2.2kg
AJH45G-24	Adjustable 45mm Joist Support (AU & NZ Price Book)	0.28kg	24	707392025337	200 x 265 x 210mm, 6.5kg
AJH45G-8	Adjustable 45mm Joist Support (NZ Price Book only)	0.28kg	8	707392025320	205 x 260 x 105mm, 2.3kg
AJ45KIT	Adjustable 45mm Joist Support KIT (Includes 100mm bolts, nuts, washers & concrete anchor) (AU & NZ Price Book)	0.48kg	16	707392025405	265 x 200 x 210mm, 7.8kg
AJH50G-24	Adjustable 50mm Joist Support (AU & NZ Price Book)	0.28kg	24	707392025375	200 x 265 x 210mm, 6.8kg
AJH50G-8	Adjustable 50mm Joist Support	0.28kg	8	707392025320	205 x 260 x 105mm, 2.4kg

**Note:** No bolts, washers, anchors are included unless stated otherwise.



AJ45KIT supplied with fasteners



All others supplied loose

