

Fastening Hardwood Decking and Cladding Using DHSD Hardwood Decking Screws



The builder was looking at ways to reduce construction costs and we met on site to show the solutions we could offer. It was a large architecturally designed commercial building to be used as a child care centre for children 6 months to 6 years old in Rouse Hill, NSW. The building was to be constructed mainly out of steel and concrete with the majority of external walls covered in hardwood cladding and with 500 square metres of hardwood decking.

THE CHALLENGE

The builder Blue Group Services procured all the materials and fixings, and then sub-contracted the labour for the actual installation (to PR Brooks Services). Their challenge was how they balanced the fixings cost vs the time to install (labour cost) so that the overall job cost fell within plan.



E5 Framing Reinforcing Brackets



DHSD Hardwood Decking Screws

PROJECT INFORMATION

Project Category

Hardwood Decking and Cladding

Project Name

Childcare Centre Rouse Hill

Project Owner

Fit Kidz Learning Centre

Builder

Blue Group Services

Sub-Contractor

PR Brooks Services

Simpson Strong-Tie Products

DHSD Hardwood Decking Screws

Project Start Date

June 2019

CHALLENGE

How both builder and contractor balanced the fixings cost vs the time to install (labour cost) so that the overall job cost fell within plan?

SOLUTION

Used Quik Drive Auto-Feed Driving System with collated 305 stainless steel DHSD hardwood decking screws.

RESULTS

The decking and cladding on the job were able to be completed weeks ahead of schedule and therefore saved money on labour around 32k!

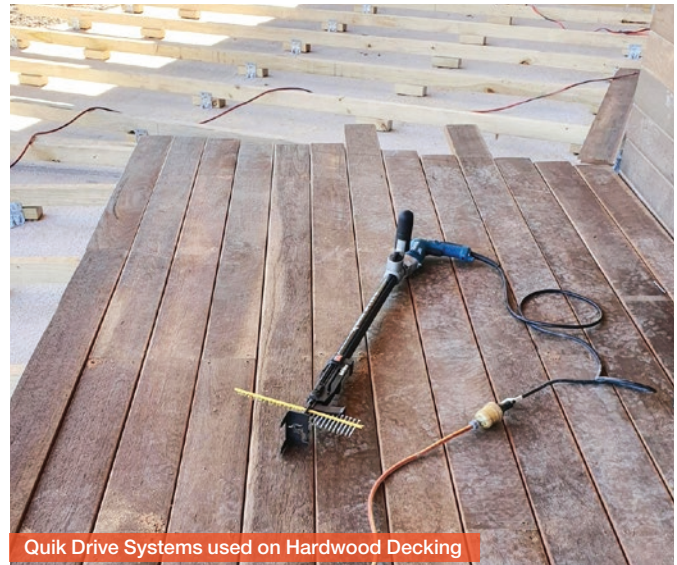
Simpson Strong-Tie® CASE STUDY

THE SOLUTION

A time was arranged to meet onsite and demo the Simpson Strong-Tie solution. In this case it was DHSD hardwood screws for cladding and the same screws to be used on the decking. The cost of our screws are 3 times the price on what had already been quoted to use. However, the cost saving isn't in the fixings but the labour.

The generic screws that were originally going to be used required pre-drilling. For this fact alone our screws are installed in half the time. With the addition of the Quik Drive system the screws could now be installed even faster again.

After the demo they made a decision to install the cladding with loose screws using an impact driver, based on the location that the screws needed to go in to. For the decking, the decision was to go collated with Quik Drive. The added benefit was being able to stand up to drive screws which was easier on the installer's, and with the decking spacers the screws were put in the right spot every time without the need to string-line.



Quik Drive Systems used on Hardwood Decking

THE RESULTS

The results were incredible! We saved Blue Group \$12,000 in labour for the hardwood cladding and \$20,000 in labour on the decking. So combined savings were a massive \$32k!

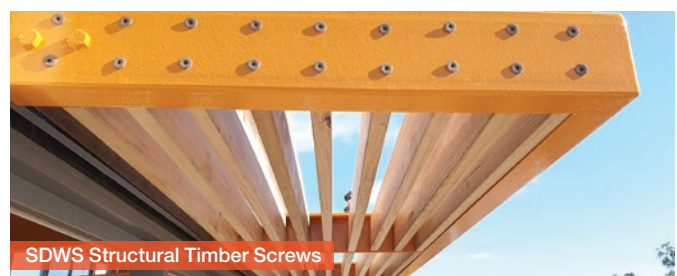
The decking and cladding on the job were able to be completed weeks ahead of schedule and therefore saved money on labour. The Quik Drive system after the PR Brooks boys were confident with the tool made the job much more comfortable and productive as they were off their hands and knees.

This project was the first time Simpson Strong-Tie solutions were used by both Blue Group and PR Brooks. It won't be the last and both companies will be asking about what solutions we can offer on future projects.

Simpson Strong-Tie also supplied the following products on the project – E5 framing reinforcing brackets, SD9 connector screws, SDWS structural timber screws, BFHSD bi-metal hardwood to steel joist screws.



Finished Wall Cladding installed with DHSD Screws



SDWS Structural Timber Screws

**MORE
INFO**

Simpson Strong-Tie® Australia Pty Ltd
Call **1300 STRONGTIE** (1300 787664)

www.strongtie.com.au